



Samaritan Counseling Center Hawaii

Accredited by the Solihten Institute • Serving Hawai'i's Diverse Communities Since 1989

November 2021

BOARD OF DIRECTORS

President

Rev. Dr. George Clifford

Vice President

Rev. Dr. Robert Steele

Treasurer

Dr. M. Stanton Michels

Secretary

Chandra Davis

Directors

Kapono Faitau

Dr. AnneMarie Gumataotao

Linda Rose Herman

Michelle Malulani Kama

Rev. Neal MacPherson

David "Kawika" Rich

Linda Rich

Veronica Rich

Rev. Dr. Bert Sumikawa

STAFF

Rachelle Chang - *Executive Director*

Lori Besignano - *Administrative Assistant*

Gary Augustin, PhD, LMFT

Clinical Director

Erin Castillo, LCSW

Mimi Demura-Devore, LCSW

Sheryl-Ann Holland, LCSW

Diana Honeker, LMFT

Darcy Ing, PsyD

S. Jesse Kastlic, LMHC

Cory Komatsu, LMHC

Harvey Leighnor, LCSW

Tom Miyashiro, LMFT

Marcia Myers, LMHC, CSAC

Daniel Ruseborn, LMFT, CSAC

Wesley Taira, LCSW

Dr. Alan Buffenstein - *Consultant*



President's Message Rev. Dr. George Clifford, President

2021 has been a year of challenge and opportunity for Samaritan Counseling Center Hawai'i.

The Center and its supporters overcame every challenge. When the COVID-19 pandemic made in-person therapy unsafe, our counselors rapidly pivoted to telehealth. When pandemic related issues caused more people to seek mental health counseling and some insurers reduced reimbursement rates for telehealth sessions, the Center's faithful contributors met that challenge. Consequently, the Center has continued to honor its promise to never turn a client away because of inability to pay. And, the Center remains Hawai'i's premier mental health counseling service that integrates the client's spirituality into the healing process in accordance with the client's desires.

Pivoting to telehealth has enabled the Center to expand our service area to include clients on the neighbor islands, and offered new opportunities to raise awareness of our services and expand our network of supporters. Thus, the Center has experienced an approximate 50% increase in the annual total of counseling sessions from 2018 to 2021.

Looking to the future, Samaritan Counseling Center Hawai'i sits on the cusp of transitioning from a small to a mid-size center among the Solihten Institute's network of forty plus centers. Not growing means ignoring the large, unmet demand for affordable mental health care that integrates the client's spirituality into the healing process.

Conversely, ongoing growth highlights our need to examine how to staff and fund the Center's next chapter. From my conversations with other Solihten Institute Board presidents, I know that no center has successfully transitioned from small to mid-size while continuing to guarantee to never turn anyone away because of inability to pay. Yet, that promise is the reason the Center's Board members, counselors, and staff are committed to the Center.

Together, we will go where no center has yet gone. We will uphold and strengthen our promise to the people of Hawai'i. Samaritan Counseling Center Hawai'i will become the first center to grow while maintaining its promise to never turn anyone away because of an inability to pay. I look forward to our making that journey together.

Celebrating Over 30 Years of Service

1020 South Beretania Street, Honolulu, HI 96814

Phone: (808) 545-2740 • Fax: (808) 545-2852 • Email: info@samaritanhawaii.org

Website: www.samaritancounselingcenterhawaii.org

Facebook: www.facebook.com/samaritancounselingcenterhawaii YouTube: tinyurl.com/scchyt



Strength of Purpose Rachele Chang, Executive Director

I recently attended a Purpose Workshop with Blue Zones Hawaii. They describe purpose as “the inward intent that drives our outward actions.”

Our lives are a constant “life spiral” of triggering events and life changes that can knock us off course. Purpose is what helps make the right choices and take action.

The Center’s purpose is clear: to help people become healthy and whole. Our purpose draws others who envision the same future: compassionate counselors like **S. Jesse Kastelic**, Mental Health Counselor and **Harvey Leighnor**, Clinical Social Worker, who joined us in 2021; and compassionate partners like **NAMI Hawaii**, **Sidney Stern Memorial Trust**, **Woman’s Board of Missions**, and **Women’s Fund of Hawai’i**, who believe in our mission.

I invite you to reflect on your purpose. What are your gifts? Are your actions aligned with your values and purpose?

Sparking a Blaze of Volunteers



Hawai’i Community Foundation awarded us with a membership to **Catchafire**, which matches professionals who want to donate their time with nonprofits who need their skills. So far, UX Designer **Derek Liu** completed a website audit; and web developer **Don Nelson** is updating our website.



Two Gracious Lives Rev. Dr. Gary Augustin, Clinical Director

Over the past several months we lost two stalwart SCCH supporters: **Yoshiaki Fujitani** (1923-2021) and **Esther Dye** (1922-2021).

Yoshi was one of the original supporters of Samaritan Counseling Center Hawai’i. He served on the Board and was President of the Board in 1995-1996, taking the reins in the Center’s seventh year, when Phyllis Roe was recovering from surgery for an aneurism. He noted that it was the Year of the Boar on the Chinese Zodiac. Traditionally, Boars are “headstrong” and characterized by “reckless courage.” Yoshi reframed this viewpoint by changing “headstrong” to “resolute” and “purposeful.” Yoshi’s vision is still evidenced by the Center’s outreach to those needing spiritual and mental health care. He continued serving on the Board through the early 2000s and was the unofficial photographer at Center events.

Esther became a strong supporter of our fundraising campaigns, which were initiated by her husband Bob Dye in the early 1990s. She was able to motivate her team to exceed their funding goals, and received the Center’s Distinguished Service Award in 2004. “What Esther loved most in life was people... She forged and cultivated close, diverse relationships that spanned nearly a century,” her family says. “She sought beauty and joy in the world, found it wherever she went, and presented it to whomever she was with.”

Both lives reflected a commitment and dedication to the Center.

Mahalo to Our Supporters May 1, 2021 to October 31, 2021

Anonymous
Atherton Family Foundation
Gary and Chat Augustin—*In Memory of Esther Dye; In Memory of Yoshiaki Fujitani; Endowment*
Dorothy Bloom
Rachele Chang—*Birthday Fundraiser*
George and Susan Clifford
Episcopal Church in Hawai’i
Anke Flohr
Francis and Jo Ann Fukumoto
Peter and AnneMarie Gumataotao
H. Stanley Jones
Linda Rose Herman—*Birthday Fundraiser*
Jane Katayama—*In Honor of Mimi Demura-Devore*
Ann Theresa Lange—*In Honor of Larry Fisher*
Deborah Candace Love
Ken and Diane Matsuura
Marilyn Stassen-McLaughlin
Joyce Metzger
Ethel Aiko Oda
Parker United Methodist Church
Project Dana
Linda Rich
Anita Sasaki
Scott Schwager
Sidney Stern Memorial Trust
Robert and Jean Steele
James Temple
Susan Tengan
Walmart Community Grant
Woman’s Board of Missions
Women’s Fund of Hawai’i
Nathan K. Wong
Henry Zerbe



Give Aloha: With your help, we raised **\$2,451** for the Client Assistance Fund! This includes a bonus “boost” from **Foodland** and **Western Union**. Thank you to Give Aloha donors Anonymous, Gary Augustin, Rachele Chang, Ruth Chang, Richard Morris, Dayle Osborn, Larry Osborn, and Gloria Young.

Aloha and mahalo for helping people receive the mental health counseling they need in these challenging times!

Make a gift today!
Scan this QR code with your mobile device camera and connect instantly to PayPal.



For more ways to give:

samaritancounselingcenterhawaii.org/giving



Blessing with Rev. Dr. Bert Sumikawa and Rev. Dr. George Clifford

Mahalo macy's

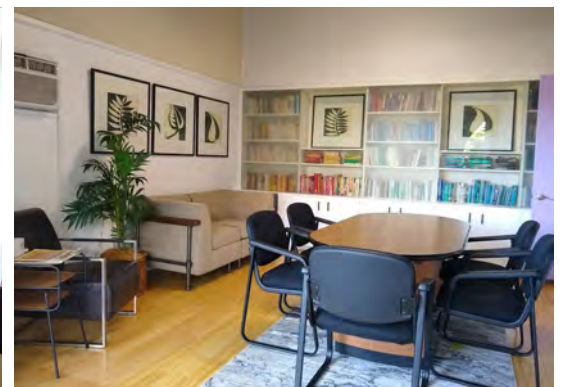
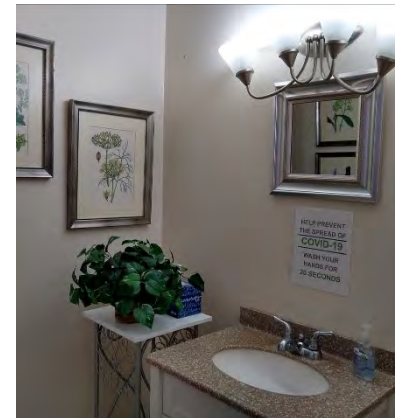
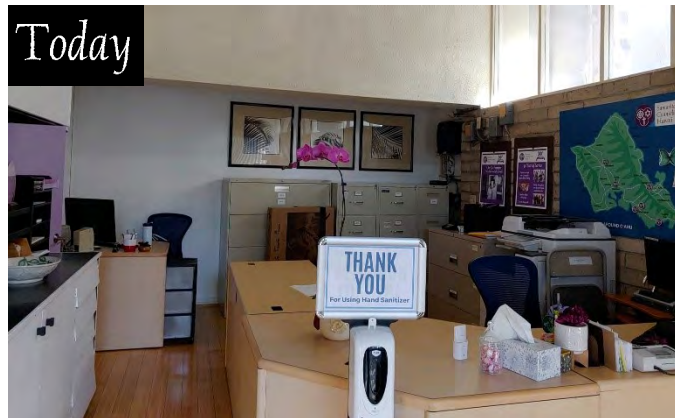
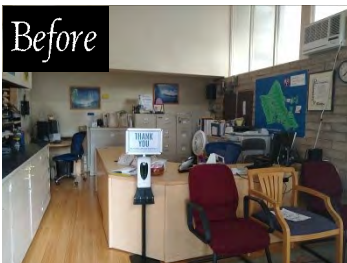


Lori Besignano and Rachelle Chang with gift bags from NAMI Hawaii

In 2021, **Macy's** and the **National Alliance on Mental Illness (NAMI)** shared their appreciation for frontline healthcare workers across the country. Kumi Macdonald, Executive Director of **NAMI Hawaii**, nominated the Center for an office makeover. Renovations began with the support of Demmis Cisneros, Store Manager of **Macy's Ala Moana**. On June 15, we celebrated Macy's generosity with a blessing and ribbon-cutting; and NAMI Hawaii gave gift bags to counselors and staff to recognize their healing work.



Before, the office was cluttered, dark, and mismatched. Sue Lee, Ron Richards, and Greg Romuar Jr. from **Macy's Ala Moana** cleaned, painted the walls, cabinets, and doors, fixed doorways, added beautiful prints on the walls, re-organized bookshelves, and added comfortable, right-sized furniture. Today, the office is a welcoming, serene space where clients can begin to heal and staff can feel rejuvenated. Mahalo, Macy's!





Honoring Fr. Clarence "Larry" Fisher

Samaritan Counseling Center Hawai'i and Our Lady of Sorrows Church honored Fr. Clarence "Larry" Fisher with a bench and honorary plaque in his name on the parish grounds. We recognize and celebrate Fr. Larry's 60th Jubilee, 30 years of board service with Samaritan Counseling Center Hawai'i,

17 years as pastor of Our Lady of Sorrows Church, and wise, compassionate spiritual leadership. The plaque reads:

In Honor of Fr. Clarence "Larry" Fisher, "The Lord has done great things for us; and we are filled with joy." Psalm 126:3.

Volunteer Spotlight

Mahalo to our awesome volunteers: **Chris Thul**, a student at the University of Hawai'i at Manoa School of Social Work; **Katie Uekawa**, a student at the University of Hawai'i at Manoa who works as a nurse assistant; **Osmundo "JR" Rous**, a Marine Corps veteran and University of Hawai'i graduate who is pursuing a career in medicine; and **Bailee Otto**, a student at Hawaii Pacific University majoring in Public Health. They are helping to keep the office running smoothly by filing, mailing, writing e-newsletters, posting on social media, and even moving furniture!



Revitalizing the Honpa Office with a Walmart Community Grant

In Fall 2021, the Walmart store on Ke'eaumoku Street trusted Samaritan Counseling Center Hawai'i with a Community Grant to revitalize our Honpa Hongwanji Hawai'i Betsuin office in Honolulu.

Before, the counseling room had an oversized, mustard yellow sofa and pink Oriental rug that made the room feel cramped. With Walmart's help, we purchased a right-sized, comfortable loveseat, calming floral rug, matching end-tables, and new furnishings.

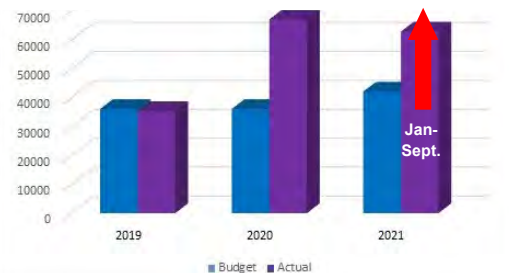
Mahalo, Walmart, for helping us create a counseling room that feels serene, spacious, and welcoming.



The Impact of COVID-19

From January to September 2021, the Client Assistance Fund provided \$62,762 in mental health subsidies to people in need, a 49.4% increase to date over the projected budget. With your help, we have not turned anyone away because of their financial situation.

Client Assistance Fund
Budget vs. Actual Subsidies, 2019, 2020, and Jan-Sept. 2021



A Hundred Millions Reasons: Suicide Prevention and Resilience

In June, 66 people attended a 2-day virtual workshop, "A Hundred Million Reasons," presented by Samaritan Counseling Center Hawai'i, in partnership with the City and County of Honolulu Grant-in-Aid program and the Prevent Suicide Hawaii Task Force.

After the workshop, 94% of attendees slightly or strongly agreed that they felt more comfortable talking about suicide; and 100% would recommend this workshop to others.

"This was very helpful, and I am grateful for all the hard work of the presenters and the hearts of the participants. Definitely felt the aloha spirit of everyone involved," shared one attendee.

Another wrote, "I cannot tell you how much value that has added to my life as I help and serve those in need. Thank you!"

Workshop speakers were Deborah Goebert, Dr. P.H., Professor, University of Hawai'i, John A. Burns School of Medicine; Brent Oto, CPS, Suicide Prevention Program Manager, 9th MSC Army Reserves; and Mestisa Gass, PsyD, Program Director, Mental Health America of Hawai'i.

Mind • Body • Spirit • Community

Fight Destiny Sharion

On these islands that were invaded,
taken and stay illegally occupied,

We have a problem with mass incarceration,
the cash bail system and harsh sentencing regulations because
they harm our communities and destroy lives.

We are Young Progressives Demanding Action
and we will not stand idly by and let our government support,
endorse and enforce poorly drafted policy
that is supposed to protect us but in truth
only reflects the views of special interest groups.

Bail is not meant to be a form of pretrial punishment
however they are using it to get convictions. Now pay attention.
69% of arrestees in Hawaii during a 2017 bail study changed their
plea from innocent to guilty while in custody. Money is set as a
condition of release at least 90% of the time and half of these folks
barely have a dime so in the state of Hawaii...

50% of all detainees haven't even been convicted of a crime. We
have outdated policies and regulations that disproportionately
place Native Hawaiians and Pacific Islanders behind bars

Target the poor and furthermore aren't truly pono at their core.

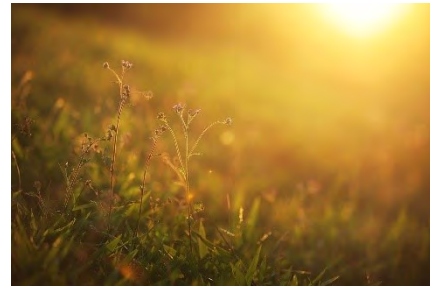
It has to stop. We are asking our governing body to stand up.

We want reform. A cash bail system has not been the norm.

We have to fight
Fight for the people
Fight for the families
Fight for community
Fight for humanity

© Destiny Sharion 2021

Morning Mantra Destiny Sharion



You are an essence of energy flowing with love and light.

Be yourself always, it's ok to cry sometimes but don't hide
behind broken smiles and lost time.

Remember, you create the path of your own life. I know at
times reality seems so real it's crippling but please believe
this isn't everything.

Remember to breathe, slowly and deeply keeping energy
flowing continuously through you.

Breathe in, 2...3...4 and out, 2...3...4

(Repeat three times for best results)

Destiny Sharion, MSW is an accomplished spoken word artist and poet
who believes in "Art as Activism," delivering powerful testimony at the
legislature on issues like police violence and the horrors of mass
incarceration in spoken word form. © Destiny Sharion 2021



Glorifying God in a Pandemic Rev. Dr. Gordon Marchant, Pearl City Community Church

Three hundred and seventy-five years is a long time ago. In 1646, some Scottish and English theologians produced the "Westminster Shorter Catechism." Despite the fancy title, their aim was quite simple. They wanted the keiki in their communities to understand the basics of the Christian faith.

Here's a sample question. "What is the chief end of man?"

Answer: "Man's chief end is to glorify God, and to enjoy him forever."

Take a few moments to read that answer again and reflect on the lesson being taught. Our ultimate purpose in life as Christians is to GLORIFY God (... and don't forget)... to ENJOY him forever.

During a pandemic it might seem as if much has been put on hold, or in some cases, turned upside down. Nevertheless, ministry that glorifies the Lord can still happen during COVID-19.

In fact, what you see in this photo is an example of joy! New friends and loving colleagues from Project Vision Hawai'i partnering with Pearl City Community Church in effective and caring outreach to our neighborhood. Project Vision Hawai'i provides free mobile medical screening services, helping seniors, children from low-income families, immigrants, and individuals with disabilities to see clearly and get vaccinated.

"Only eyes washed by tears can see clearly" (Louis L. Mann). COVID-19 reminds us that opportunities to glorify God can be found wherever you look for them.

The Rev. Dr. Gordon Marchant began his ministry at Pearl City Community Church in July 2018. He grew up in Canada and earned a doctorate from Wesley Theological Seminary in Washington, D.C. specializing in Multi-Ethnic Church Leadership. His Pastoral experiences include serving Multi-Congregational, Multi-Lingual Churches in Calgary, Washington D.C., Los Angeles and Honolulu.





Samaritan
Counseling Center
Hawaii

1020 S. Beretania St., Honolulu, HI 96814
www.samaritancounselingcenterhawaii.org


Make a gift today!

Scan this QR code with your mobile device camera and connect instantly to PayPal.



YOUR KOKUA IS NEEDED!
Trigger Bonus Monies for Our Charity

at www.FriendsofHawaii.org
from the 2022 Sony Open in Hawaii!



DONATION PERIOD: NOV 15, 2021 – JAN 19, 2022 (4 PM HST)

Aloha
for Hawaii Charities

CHARITIES WITH \$1,000 OR MORE IN DONATIONS QUALIFY FOR THE BOOST

- Visit friendsofhawaii.org
- Click on the Aloha for Hawaii Charities icon
- Select our charity
- Make your tax-deductible contribution
- We will receive 100% of your donation plus a bonus boost from Friends of Hawaii Charities!

Friends of Hawaii Charities will provide a one-time gift of up to \$100,000 that will be shared by all Aloha for Hawaii Charities participating charities.

Give a boost to mental health

Your donation to the Client Assistance Fund at Samaritan Counseling Center Hawai'i through Aloha for Hawaii Charities will help people receive the mental health counseling they need. You can give online or by mail:

1. **Online at friendsofhawaii.org.** Click the **Aloha for Hawaii Charities** icon and select "Samaritan Counseling Center Hawaii" from the list.
2. **By Mail.** Print the donation form at tinyurl.com/scch-ahc22 and mail your check payable to "Friends of Hawaii Charities" to 735 Bishop Street, Suite 330, Honolulu, HI 96813 (postmarked by 1/19/22).

100% of your tax-deductible donation will subsidize mental health! Plus, you can help us swing a bonus "boost" from Friends of Hawaii Charities and the Sony Open in Hawai'i!

Nov. 15, 2021 - Jan. 19, 2022 (4 PM HST)

Samaritan Counseling Center Hawai'i Locations:

Main Office:

First United Methodist Church
1020 S. Beretania St., Honolulu

Our Lady of Sorrows Catholic Church
1403 California Ave., Wahiawa

Waikeola Congregational Church
4705 Kilauea Ave., Honolulu

Honpa Hongwanji Hawaii Betsuin
1727 Pali Hwy, Honolulu

Pearl City Community Church
933 Lehua Ave., Pearl City

Calvary Episcopal Church
45-435 Aumoku St., Kaneohe